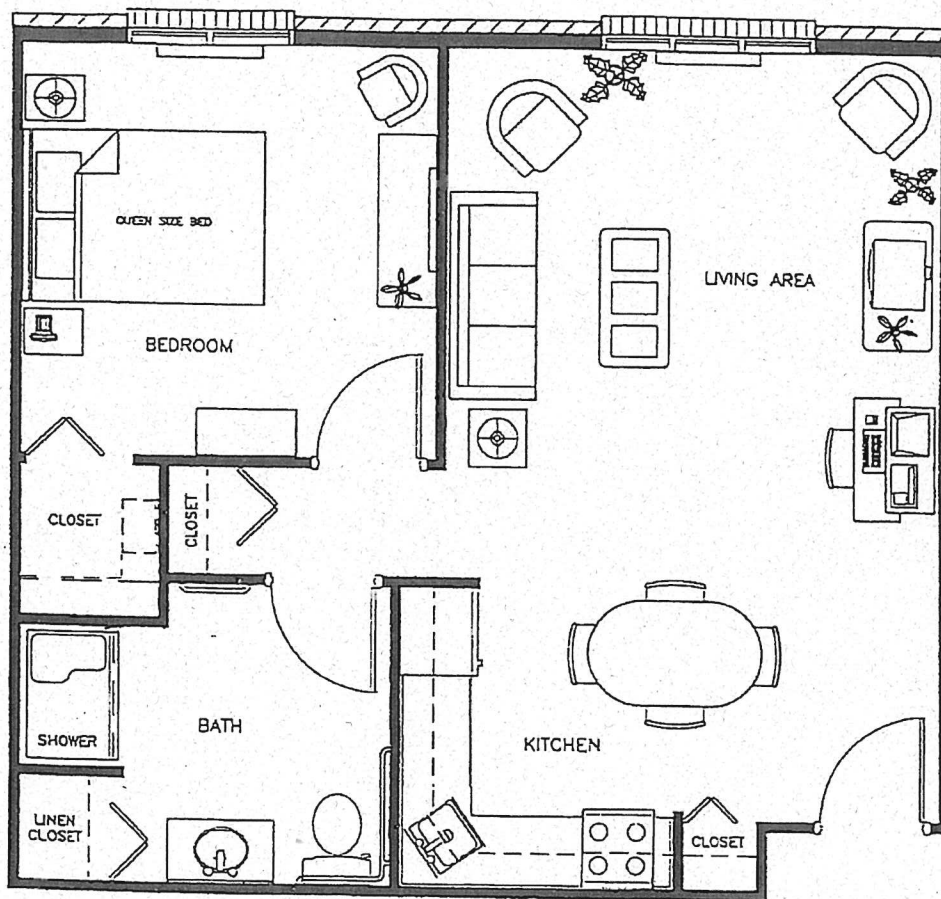




Retirement Community

CONGREGATE BUILDING ONE-BEDROOM DELUXE APARTMENT 675 SQ. FT.



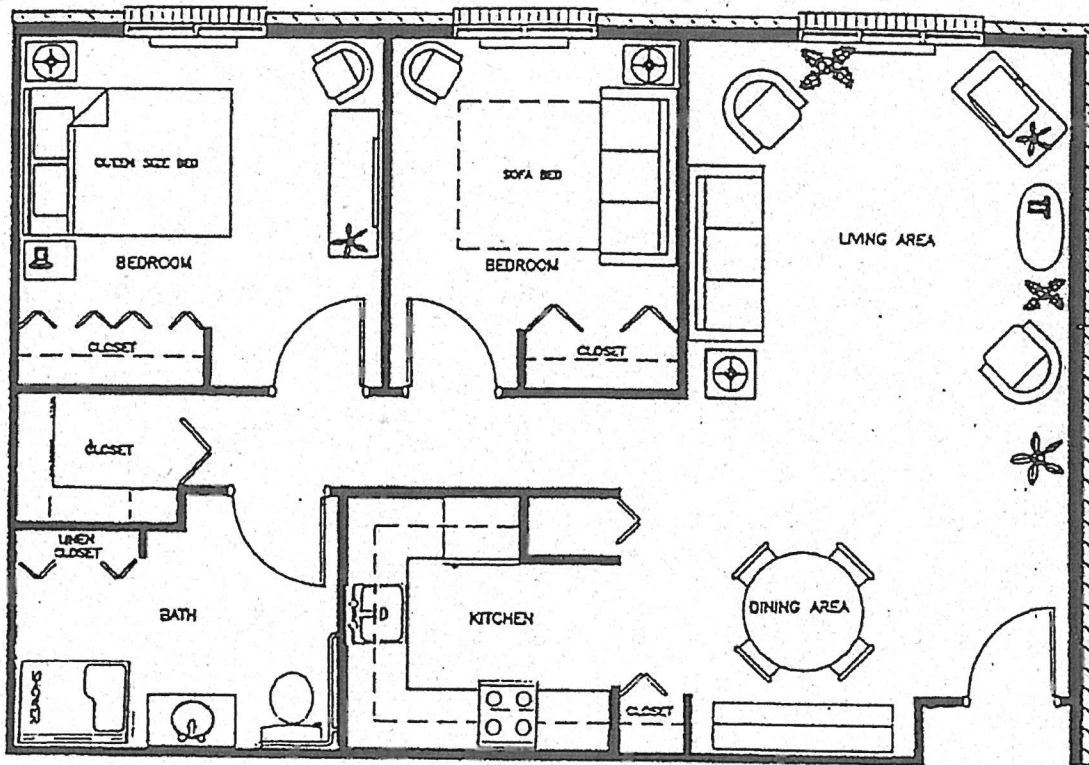
Features:

- ◆ Lower Windows for a Better View
- ◆ Wheelchair Accessible Doorways
- ◆ Shower with Seat
- ◆ Kitchen with Range and Refrigerator
- ◆ Emergency Response System
- ◆ Individually Controlled Heat & Air Conditioning
- ◆ Several Closets
- ◆ Sheer Curtains and Curtain Rods



Retirement Community

CONGREGATE BUILDING TWO-BEDROOM APARTMENT 900 SQ. FT.



Features:

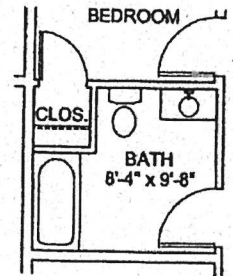
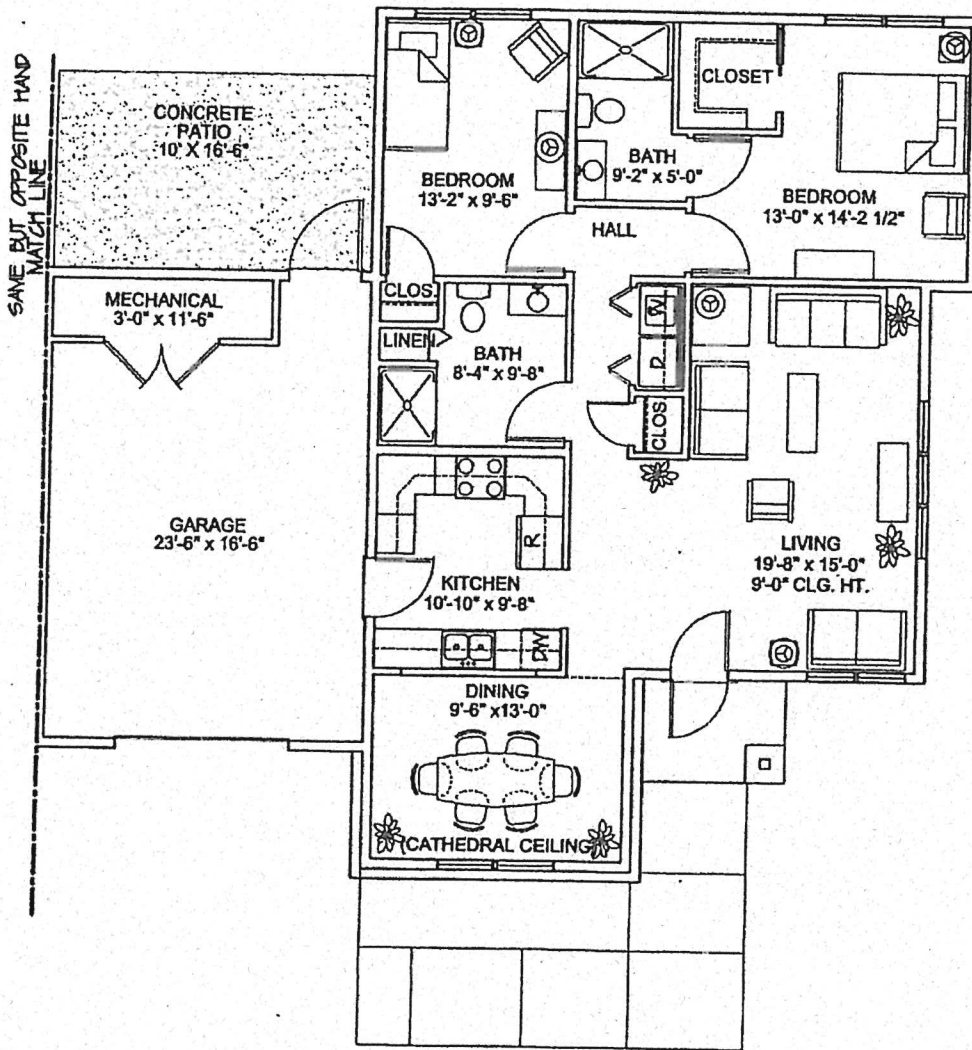
- ◆ Lower Windows for a Better View
- ◆ Wheelchair Accessible Doorways
- ◆ Emergency Response System
- ◆ Kitchen with Range and Refrigerator
- ◆ Spacious Closets
- ◆ Individually Controlled Heat & Air Conditioning
- ◆ Shower with Seat
- ◆ Sheer Curtains and Curtain Rods



Retirement Community

FLOOR PLAN DUPLEX STYLE

“A”



OPTIONAL BATHROOM PLAN

Living Area ~ 1,096.2 S. F.

Garage ~ 387.8 S. F.

Total ~ 1,484 S. F.

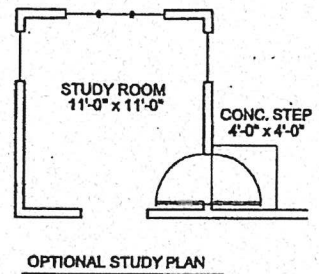
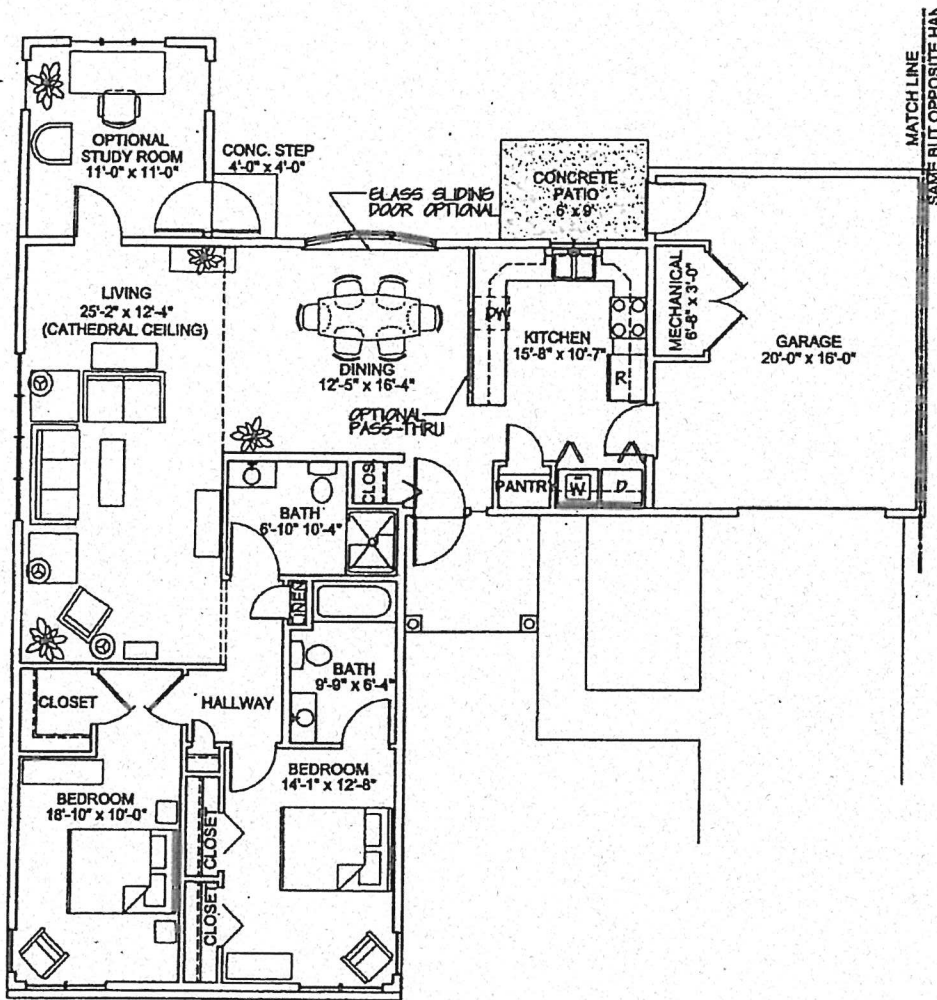
FEATURES AND AMENITIES:

- ◆ Two bedrooms
- ◆ Two full baths
- ◆ Spacious closets
- ◆ Full-size kitchen
- ◆ Major appliances included (dishwasher optional)
- ◆ Individually controlled heat and air conditioning
- ◆ Wall-to-wall carpeting
- ◆ Attached garage
- ◆ Covered front porch
- ◆ Energy efficient construction
- ◆ Emergency response system
- ◆ Lawn care
- ◆ Snow & trash removal
- ◆ Maintenance services
- ◆ Management services
- ◆ Wellness services
- ◆ Pest Control
- ◆ Planned activities
- ◆ Paid property and liability insurance
- ◆ Paid water, sewer and street lighting
- ◆ Paid real estate taxes
- ◆ Optional services readily available



Retirement Community

FLOOR PLAN DUPLEX STYLE "B"



Living Area ~ 1,268 S. F.
 Optional Study ~ 126.5 S. F.
 Garage ~ 320 S. F.
 Total ~ 1,714.5 S. F.

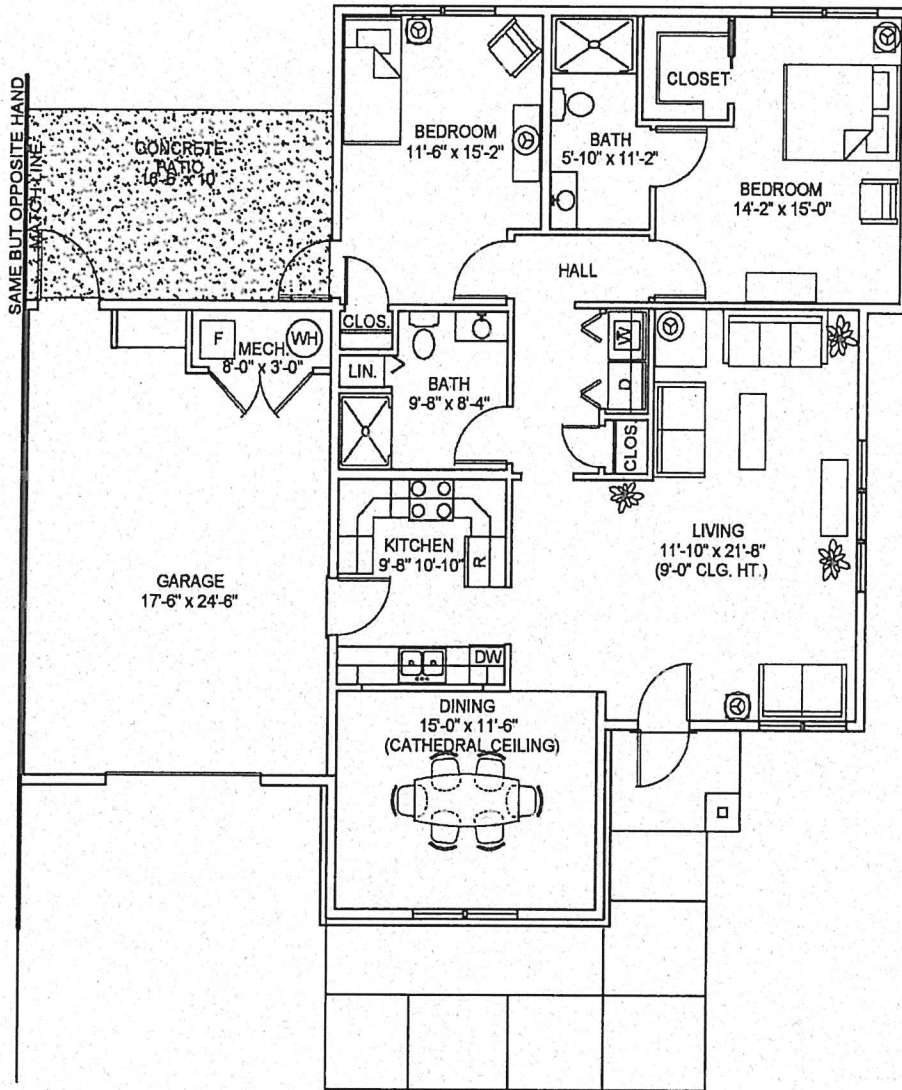
FEATURES AND AMENITIES (Refer to Resident Handbook for complete description of services listed below.)

- ◆ Two Bedrooms
- ◆ Two Full Baths
- ◆ Spacious Closets
- ◆ Full-size Kitchen
- ◆ Major Appliances Included
- ◆ Maintenance Services
- ◆ Individually Controlled
- ◆ Heat and Air Conditioning
- ◆ Covered Front Porch
- ◆ Energy Efficient Construction
- ◆ Emergency Response System
- ◆ Lawn Care
- ◆ Snow and Trash Removal
- ◆ Management Services
- ◆ Planned Activities
- ◆ Wellness Services
- ◆ Pest Control Services
- ◆ Paid Property and Liability Insurance
- ◆ Paid Water, Sewer, and Street Lighting
- ◆ Paid Real Estate Taxes
- ◆ Optional Services Readily Available
- ◆ Wall To Wall Carpeting
- ◆ Attached Garage



Retirement Community

FLOOR PLAN DUPLEX STYLE "C"



FLOOR PLAN UNIT DUPLEX "C"

LIVING AREA - 1294.9 S.F.
GARAGE - 428.7 S.F.
TOTAL - 1,723.6 S.F.



6 OCTOBER 2010

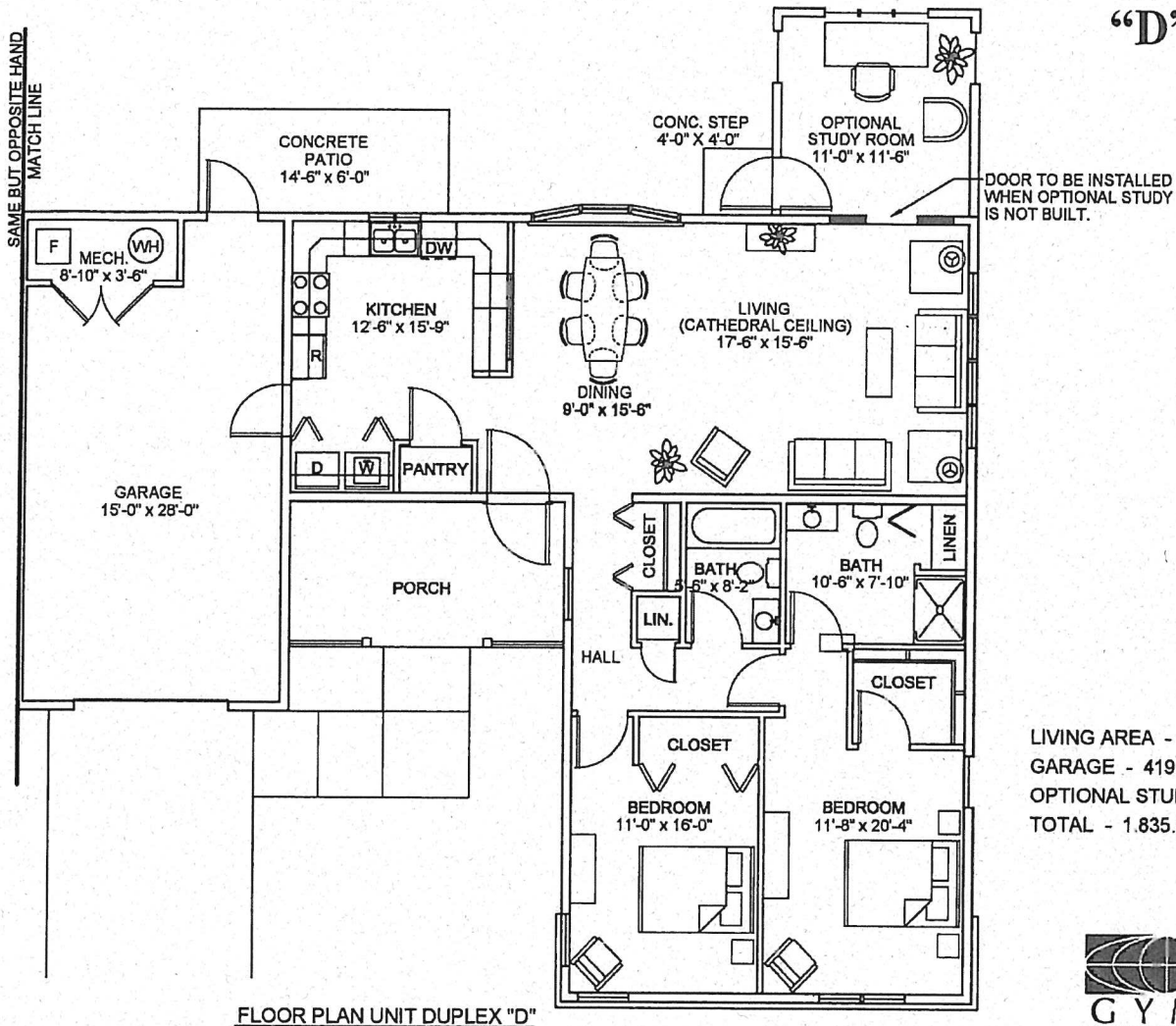
FEATURES AND AMENITIES (Refer to Resident Handbook for complete description of services listed below.)

- ◆ Two Bedrooms
- ◆ Two Full Baths
- ◆ Spacious Closets
- ◆ Full-size Kitchen
- ◆ Major Appliances Included
- ◆ Maintenance Services
- ◆ Individually Controlled
- ◆ Heat and Air Conditioning
- ◆ Covered Front Porch
- ◆ Energy Efficient Construction
- ◆ Emergency Response System
- ◆ Lawn Care
- ◆ Snow and Trash Removal
- ◆ Management Services
- ◆ Planned Activities
- ◆ Wellness Services
- ◆ Pest Control Services
- ◆ Paid Property & Liability Insurance
- ◆ Paid Water, Sewer, Street Lighting
- ◆ Paid Real Estate Taxes
- ◆ Paid Real Estate Taxes
- ◆ Optional Services Readily Available
- ◆ Wall To Wall Carpeting
- ◆ Attached Garage



Retirement Community

FLOOR PLAN DUPLEX STYLE "D"



FLOOR PLAN UNIT DUPLEX "D"

LIVING AREA - 1,289.1 S.F.
GARAGE - 419.9 S.F.
OPTIONAL STUDY - 126.5 S.F.
TOTAL - 1,835.5 S.F.



6 OCTOBER 2010

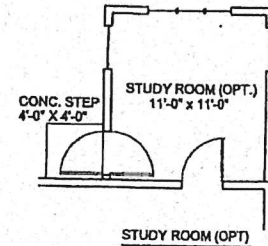
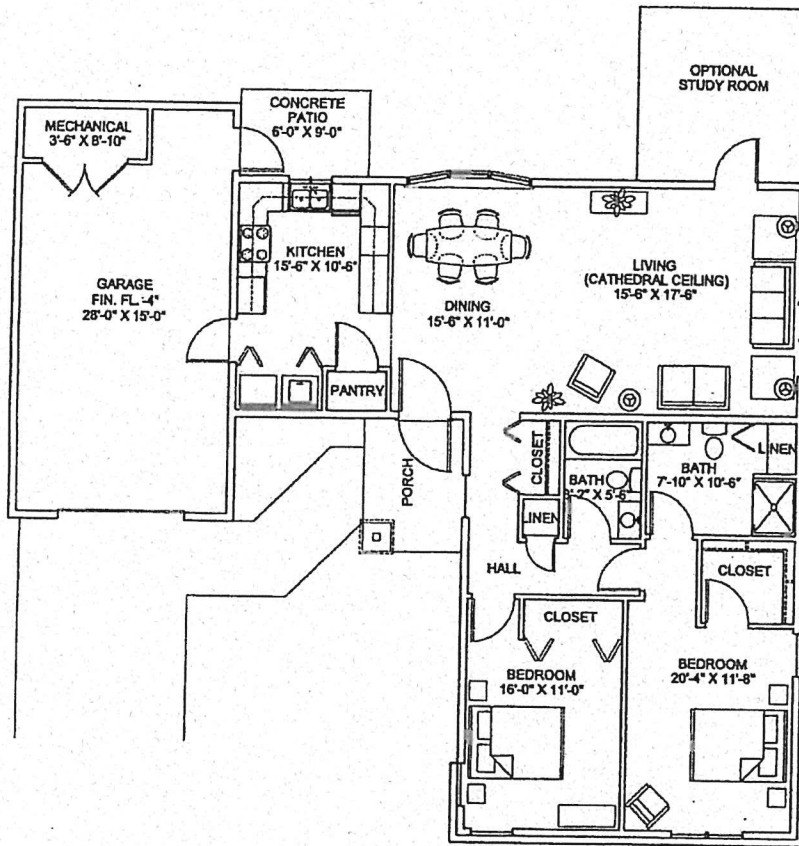
FEATURES AND AMENITIES (Refer to Resident Handbook for complete description of services listed below.)

- ◆ Two Bedrooms
- ◆ Two Full Baths
- ◆ Spacious Closets
- ◆ Full-size Kitchen
- ◆ Major Appliances Included
- ◆ Maintenance Services
- ◆ Individually Controlled
- ◆ Heat and Air Conditioning
- ◆ Covered Front Porch
- ◆ Energy Efficient Construction
- ◆ Emergency Response System
- ◆ Lawn Care
- ◆ Snow and Trash Removal
- ◆ Management Services
- ◆ Planned Activities
- ◆ Wellness Services
- ◆ Pest Control Services
- ◆ Paid Property, Liability Insurance
- ◆ Paid Water, Sewer, Street Lighting
- ◆ Paid Real Estate Taxes
- ◆ Optional Services Readily Available
- ◆ Wall To Wall Carpeting
- ◆ Attached Garage



Retirement Community

FLOOR PLANS COTTAGE "A"



Living Area ~ 1,289 S. F.
Optional Study ~ 126.5 S. F.
Garage ~ 420 S. F.
Total ~ 1,835.5 S. F.

Actual floor plan may vary slightly from illustration

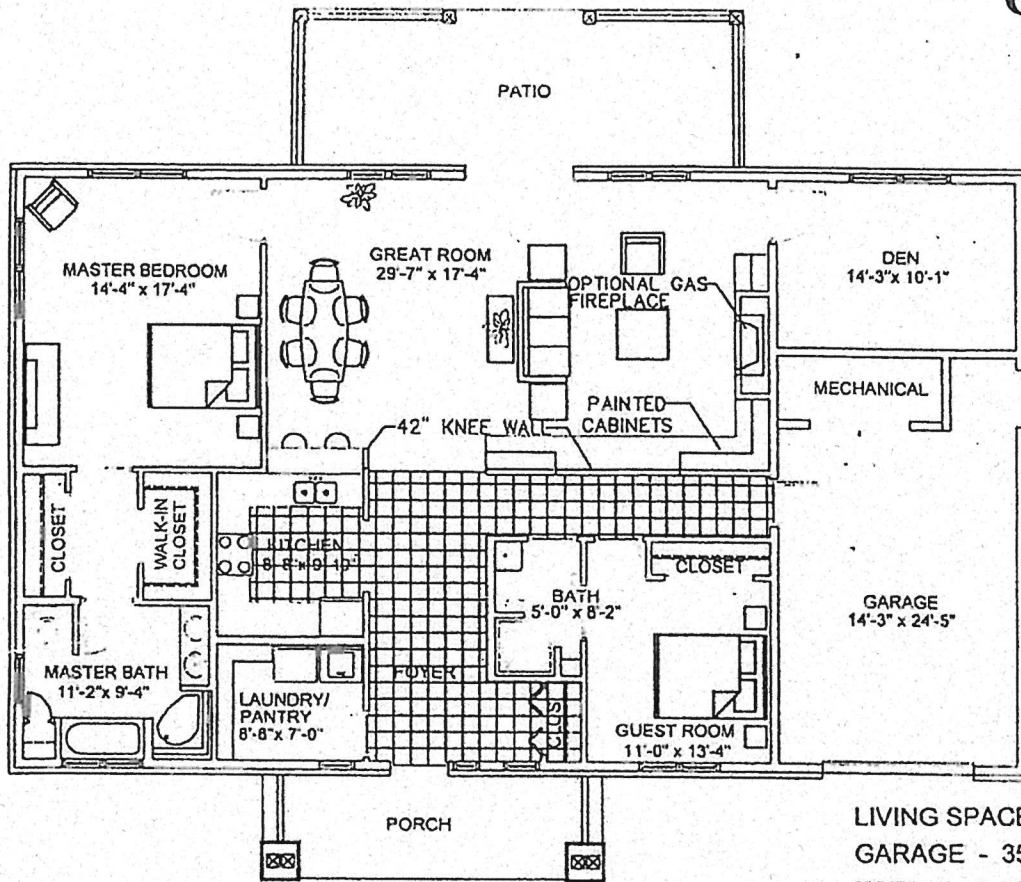
FEATURES AND AMENITIES

- ◆ Two bedrooms
- ◆ Two full baths
- ◆ Spacious closets
- ◆ Full-size kitchen
- ◆ Major appliances included (dishwasher optional)
- ◆ Individually controlled heat and air conditioning
- ◆ Wall-to-wall carpeting
- ◆ Attached garage
- ◆ Covered front porch
- ◆ Energy efficient construction
- ◆ Emergency response system
- ◆ Lawn care
- ◆ Snow & trash removal
- ◆ Maintenance services
- ◆ Management services
- ◆ Wellness services
- ◆ Pest Control
- ◆ Planned activities
- ◆ Paid property & liability insurance
- ◆ Paid water, sewer, street lighting
- ◆ Paid real estate taxes
- ◆ Optional services readily available



Retirement Community

FLOOR PLAN COTTAGE "B"



LIVING SPACE - 1,695.4 S.F.
GARAGE - 357.7 S.F.
TOTAL - 2,053.1 S.F.

Actual floor plan may vary slightly from illustration

FEATURES AND AMENITIES

- ◆ Two bedrooms
- ◆ Two full baths
- ◆ Spacious closets
- ◆ Full-size kitchen
- ◆ Major appliances included
- ◆ Wall-to-wall carpeting
- ◆ Attached garage
- ◆ Covered front porch
- ◆ Energy efficient construction
- ◆ Emergency response system
- ◆ Individually controlled heat and air conditioning
- ◆ Planned activities
- ◆ Paid property & liability insurance
- ◆ Paid water, sewer, street lighting
- ◆ Paid real estate taxes
- ◆ Optional services readily available
- ◆ Pest control services
- ◆ Lawn care
- ◆ Snow & trash removal
- ◆ Maintenance services
- ◆ Management services
- ◆ Wellness services